



UNIVERSITA' DEGLI STUDI DI UDINE

Ristrutturazione ed adeguamento
funzionale del complesso denominato
"ex scuola Blanchini" a Udine

PROGETTO ESECUTIVO "CORPO C"

PIANTA DELLA COPERTURA BAR E
PARTICOLARI COSTRUTTIVI

TAV. 2 S
SCALE varie

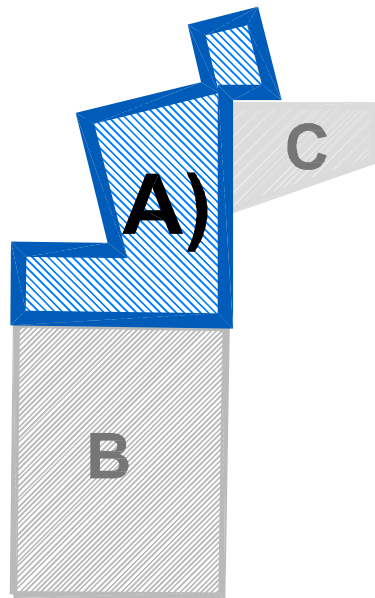
PROGETTISTA CAPOGRUPPO
dott. arch. PAOLO PETRIS

PROGETTISTA DELLE STRUTTURE E DEGLI IMPIANTI
dott. ing. MARIO CAUSERO

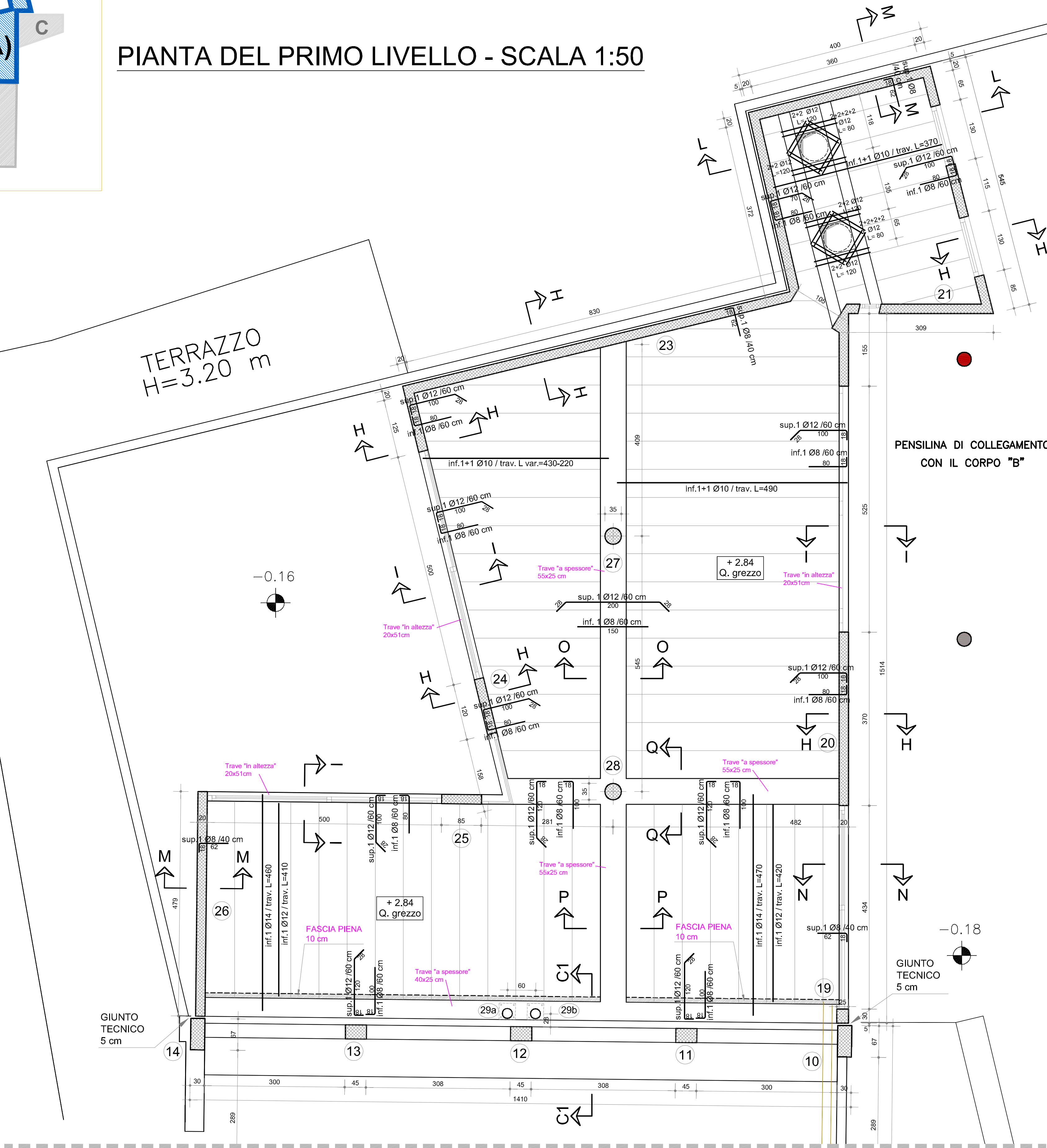
COLLABORATORI PER LE PARTI SPECIALISTICHE
IMPIANTI ELETTRICI dott. ing. PIERLUIGI DA COL
IMPIANTI MECCANICI p.i. VALENTINO MONDINI

data: 03 novembre 2012

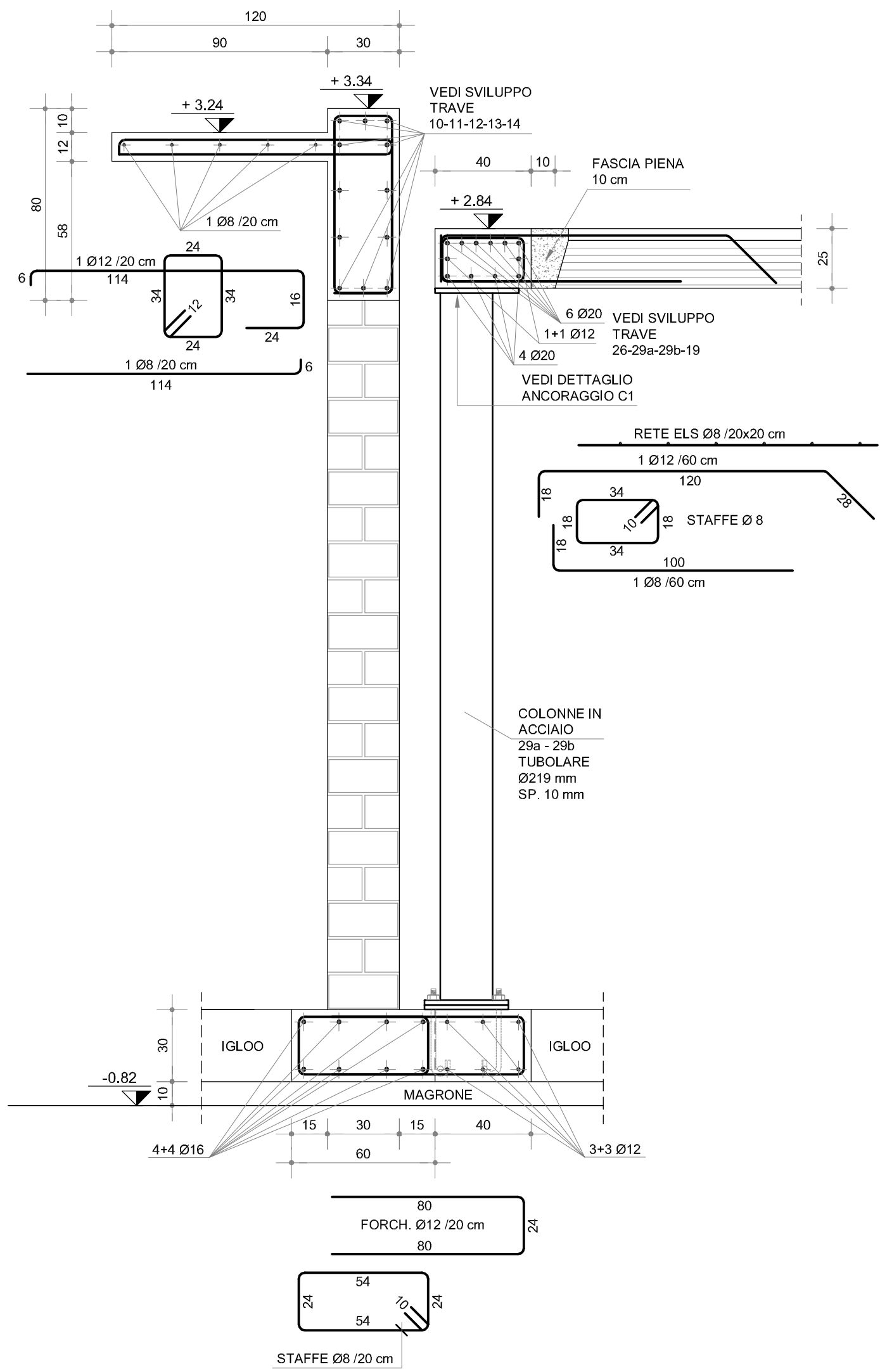
PIANTA CHIAVE: zona A)



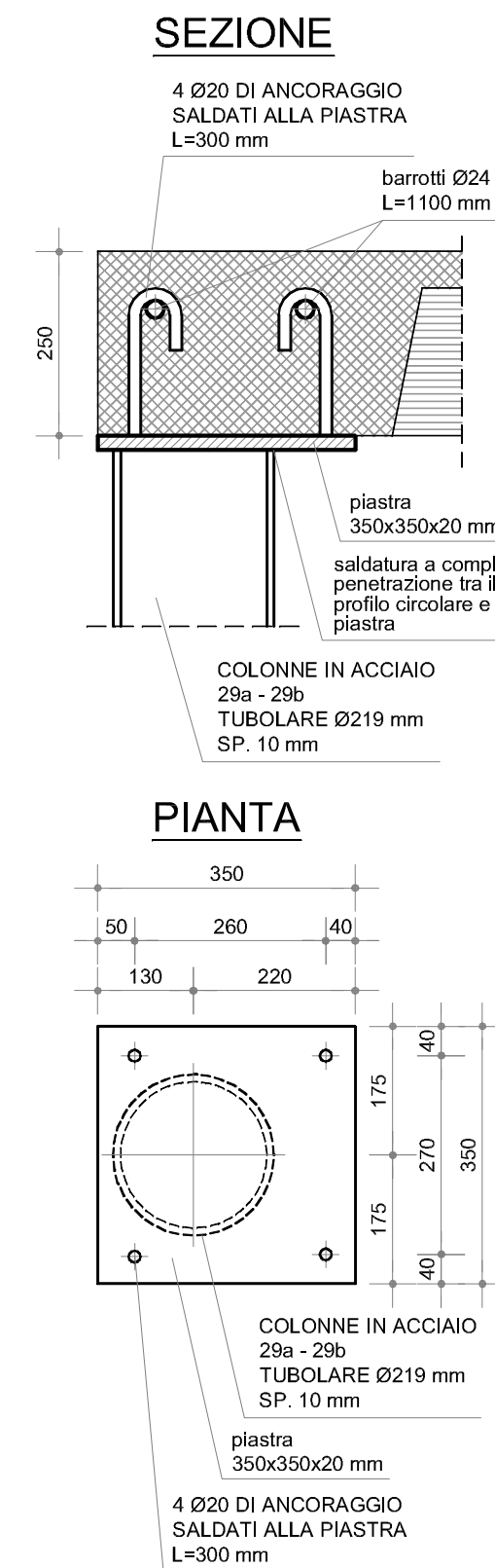
PIANTA DEL PRIMO LIVELLO - SCALA 1:50



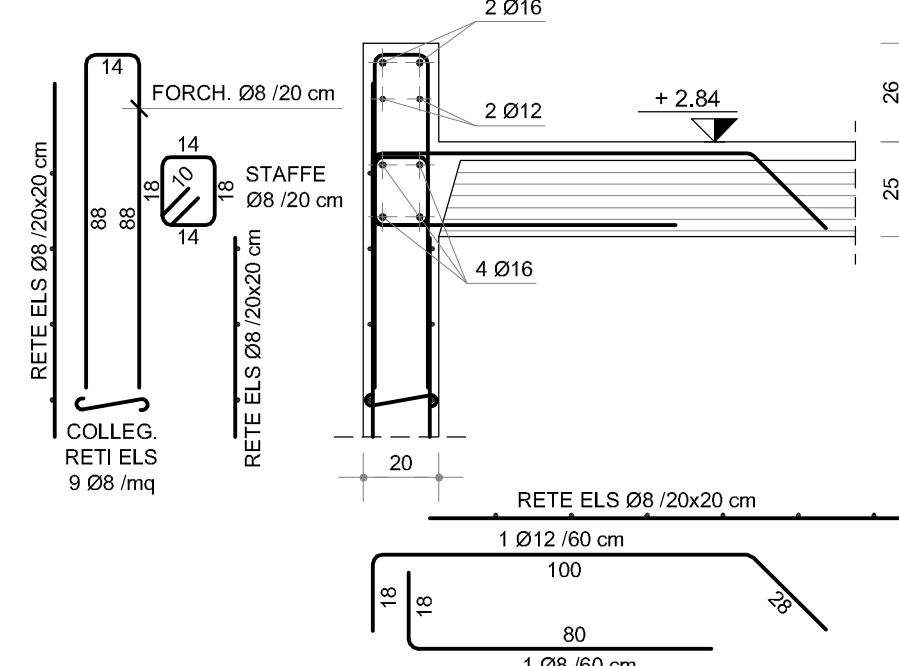
SEZ. C1-C1 - SCALA 1:20



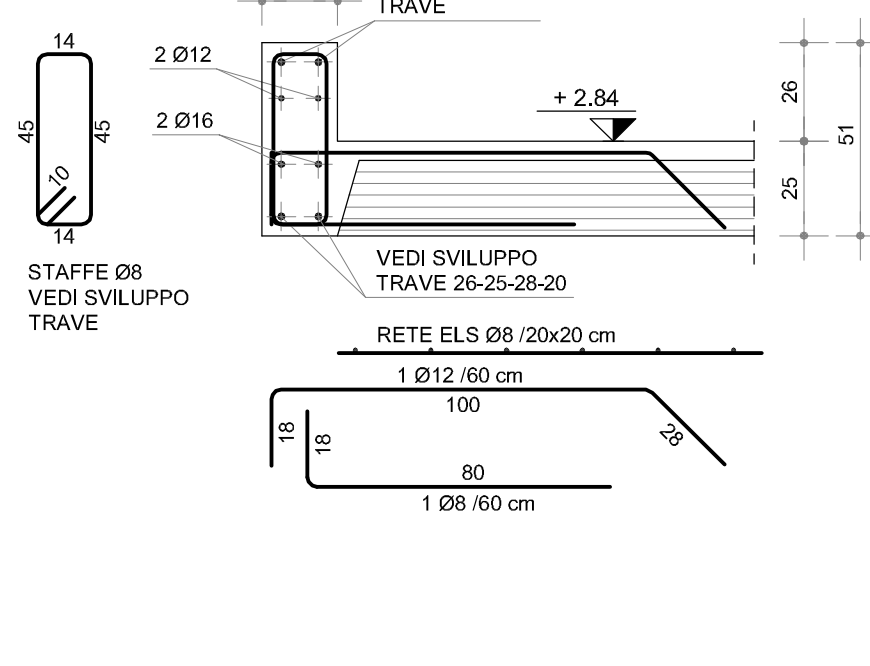
DETTAGLIO ANCORAGGIO C1 SCALA 1:10



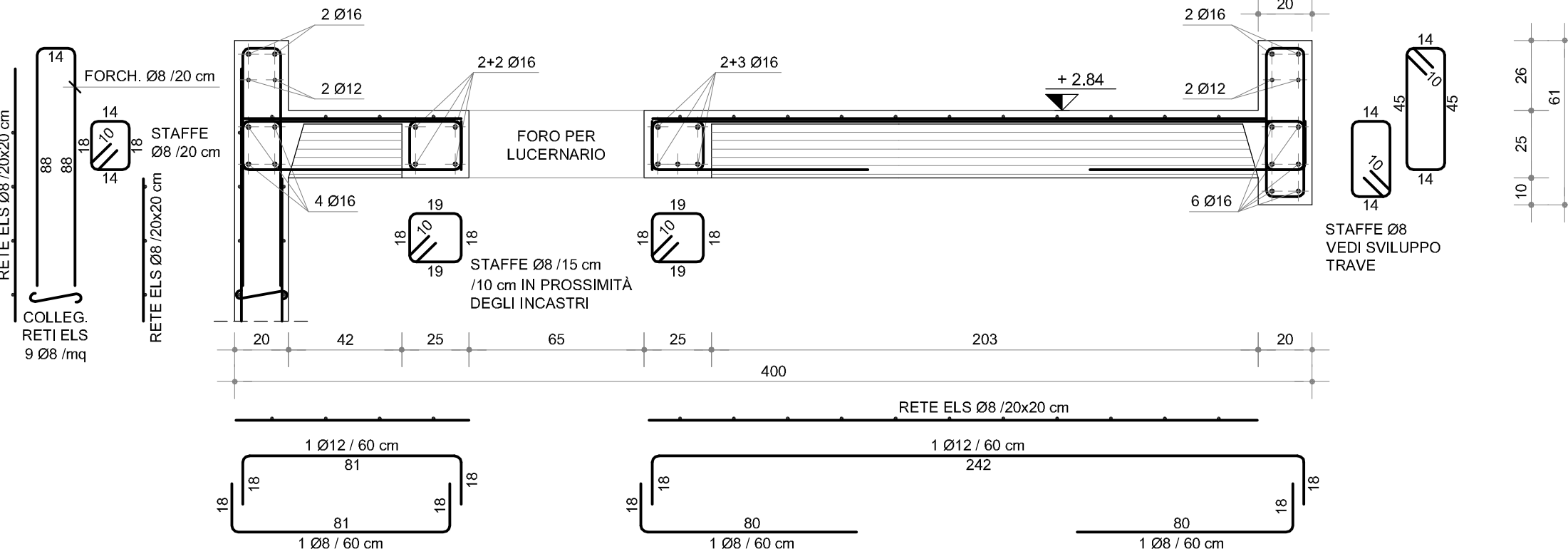
SEZ. H-H - SCALA 1:20



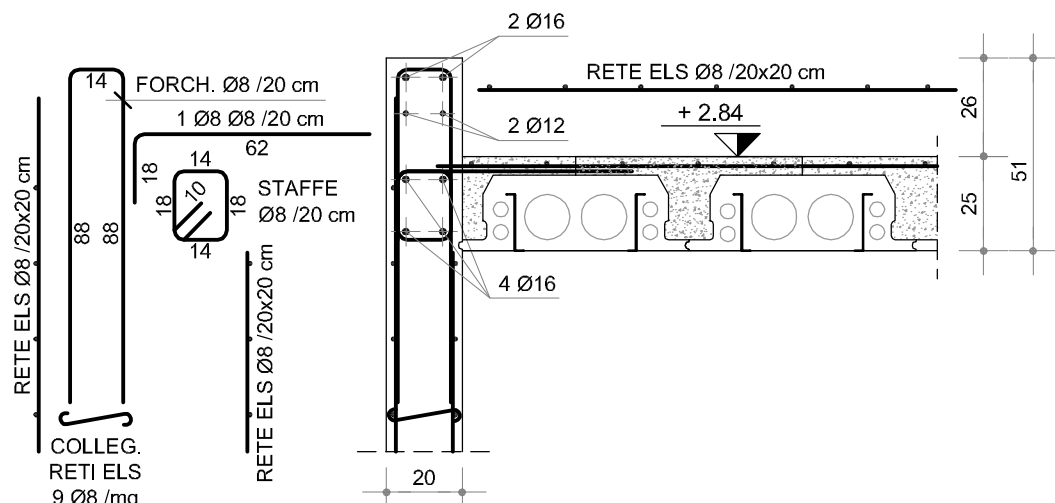
SEZ. I-I - SCALA 1:20



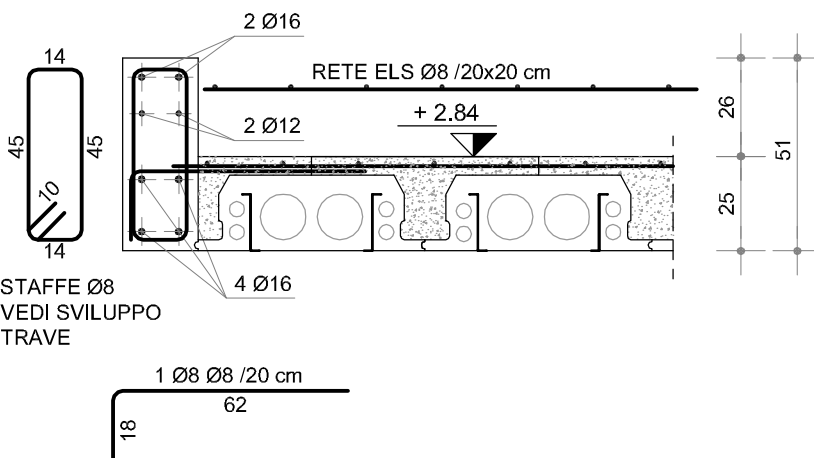
SEZ. L-L - SCALA 1:20



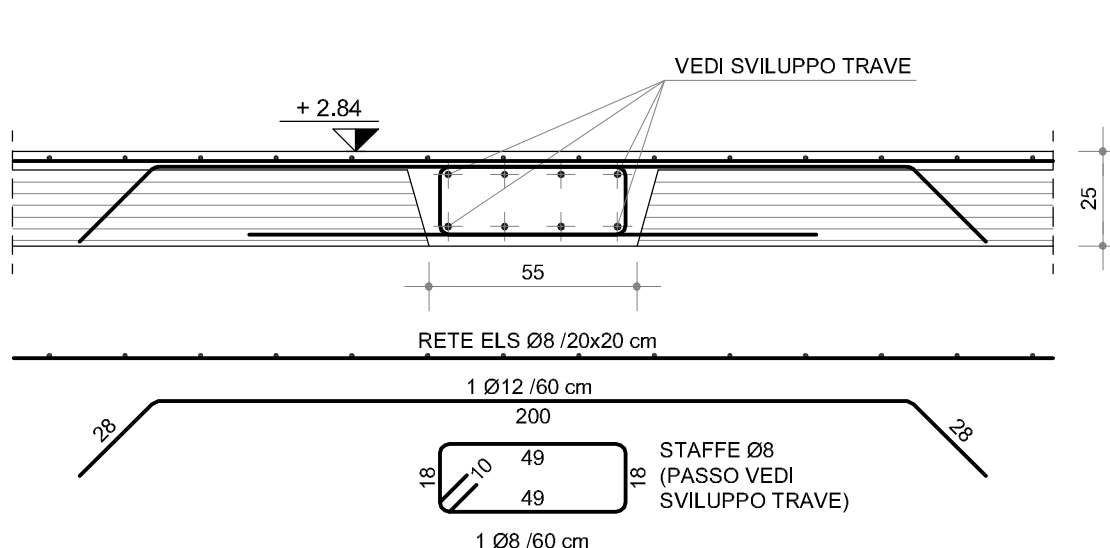
SEZ. M-M - SCALA 1:20



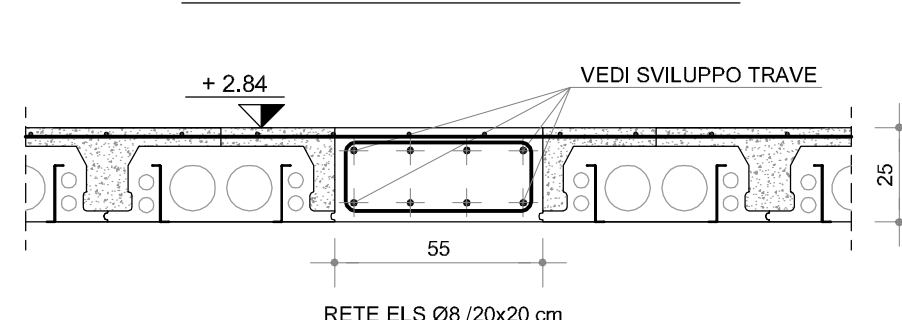
SEZ. N-N - SCALA 1:20



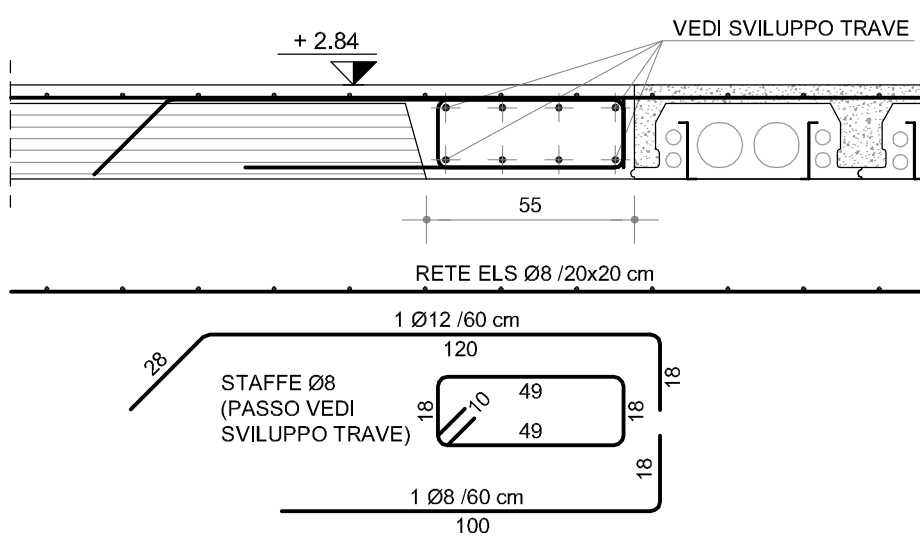
SEZ. O-O - SCALA 1:20



SEZ. P-P - SCALA 1:20



SEZ. Q-Q - SCALA 1:20



PARETE FINESTRATA